



Complete solutions
for protein and cell analyses

Easy protein analysis



Invitrogen™ protein gels

We offer solutions for all of your protein separation needs from a reliable system to handcast polyacrylamide protein gels to a variety of ready-to-use precast protein gels.

thermofisher.com/proteingels



Invitrogen™ iBlot™ 2 Dry Blotting System

Get efficient and reliable protein transfer from polyacrylamide gels to your membrane of choice for western blot analysis in 7 minutes or less without the need for buffers or an external power supply.

thermofisher.com/iblot2



Invitrogen™ iBind™ and iBind™ Flex Western Devices

Two devices, one simple technology for automated western blot processing. There are no shakers, no trays, and no timers required. Set up in minutes and walk away.

thermofisher.com/ibind



Thermo Scientific™ SuperSignal™ kits

Experience excellent performance in western blotting applications with longer light emission and stronger signal intensity than other luminol-based detection systems.

thermofisher.com/chemisubstrates



Thermo Scientific™ CL-XPosure™ Film

Our film is an affordable, convenient, high-performance, clear-blue X-ray film for chemiluminescent western blot detection.

thermofisher.com/film



Immunoassays

Our portfolio of quality immunoassay kits and reagents includes ready-to-use Invitrogen™ ELISA kits, Invitrogen™ ProcartaPlex™ multiplex kits for the Luminex® platform, high-sensitivity assays, and matched antibody pairs. All are flexible and convenient options for quantitating proteins, and include pre-coated plates with capture/detection antibodies, standards and buffers, and accessory reagents.

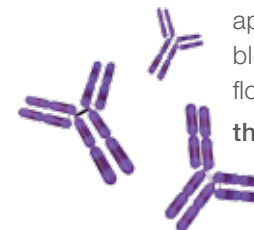
thermofisher.com/immunoassays



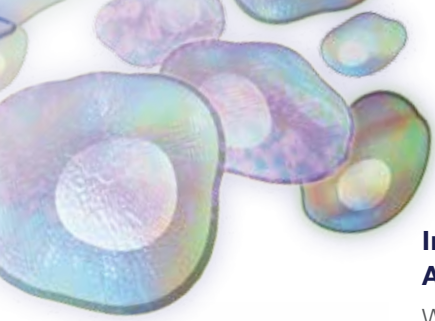
Antibodies

Explore our portfolio of over 74,000 high-quality primary and secondary antibodies, covering over 85% of the proteome. These antibodies cover 50 research areas, and support nine major applications, including western blot, immunofluorescence, and flow cytometry.

thermofisher.com/antibodies



Reliable cell analysis and flow cytometry



Invitrogen™ Countess™ II FL Automated Cell Counter

With the option for a reusable slide and fluorescence capabilities—brightfield and two user-changeable fluorescence channels—the Countess II FL Automated Cell Counter can count cells, monitor fluorescent protein expression, and measure cell viability in as little as 10 seconds.



thermofisher.com/countess

Invitrogen™ Flow Cytometry reagents with eBioscience™ antibodies

Over 10,000 conjugated antibodies specifically developed, validated*, and manufactured for flow cytometry applications, including the Super Bright dyes to expand your flow cytometry research.

thermofisher.com/flowcytometry

Invitrogen™ Attune™ NxT Flow Cytometer and Autosampler

Precision with performance—the Attune NxT Flow Cytometer is benchtop-sized and configurable with up to 4 lasers and 6–16 parameters. It also offers superior speed—up to 10x faster than traditional cytometers—and clog-resistant engineering. Convert between tubes and plates in seconds and leverage complete walk-away automation of your 96- or 384-well plates with the robotic automation-capable Attune™ NxT Autosampler. Designed to help researchers gather data like never before and achieve superior results.

thermofisher.com/attune



Invitrogen™ EVOS™ FL Auto 2 Imaging System

Perfect for long-term live-cell imaging, image tiling/stitching, and a wide range of automated imaging applications. Combined with our wide selection of reagents and kits for labeling and detection, including our flagship Invitrogen™ Alexa Fluor™ dyes, you will obtain truly stunning images.

thermofisher.com/evos



Thermo Scientific™ CellInsight™ CX7 High Content Screening (HCS) Platform

Designed for quantitative microscopy and flexibility in imaging, the CellInsight CX7 HCS Platform offers an integrated way to develop and automate high-content assays using a combination of 5-color brightfield and 7-color fluorescence imaging in confocal or wide-field modes for broad assay development that transitions to screening, at an unbelievable value.

thermofisher.com/cx7



Learn more and gain insight into protein and cell analysis research with these valuable resources:

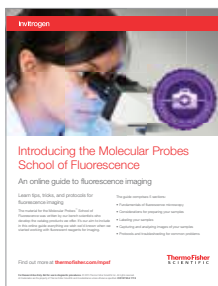


This handbook provides a technical overview of key methods in protein research, as well as guidance on choosing the right tools for optimal results. The handbook features seven sections focusing on expression, isolation and purification, electrophoresis, western blotting, mass spectrometry, assays, and crosslinking and modification.

Get your free copy at thermofisher.com/proteinhandbook



We offer information about the use of antibody-based tools for biomedical research. See our series of research-area-specific handbooks—cancer signaling pathways; stem cells, neurodegenerative diseases; and tumor-related inflammation. Request your free copy at thermofisher.com/abtoolshandbooks

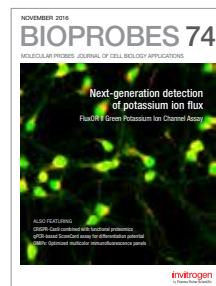


Learn about the fundamentals of fluorescence, imaging, and flow cytometry. Find protocols, troubleshooting guides, and more at thermofisher.com/mpsf

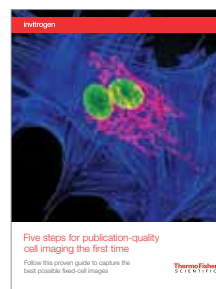


Find the right microscopy system for your needs. Automated imaging and high-content analysis platforms take your research to the next level.

thermofisher.com/cellimagingystems



Our award-winning print and online magazine highlights the latest breakthroughs in cell biology, featuring new technologies and products. Read the latest issue at thermofisher.com/bioprobes



Get publication-quality cell imaging the first time. Download this guide to learn how to capture excellent fixed-cell images at thermofisher.com/5-steps



Let us help you navigate the different tools available for protein quantitation, including tools for oncology and inflammation research, immunology, neurology, and more, in one easy-to-read reference.

See how antibody pairs, a variety of ELISA kits, and ProcartaPlex multiplex kits for the Luminex platform can help you take your research to the next level.

thermofisher.com/immunoassayguide



Learn more about our flow cytometry products and support to better enable your science. This guide covers both flagship and new, innovative products designed to deliver great results and save you time in the lab. From flow cytometry antibodies and reagents to innovative instrumentation, you'll learn how we can help you advance meaningful discoveries.

thermofisher.com/flowguide

Find out more at thermofisher.com

* The use or any variation of the word "validation" refers only to research use antibodies that were subject to functional testing to confirm that the antibody can be used with the research techniques indicated. It does not ensure that the product(s) was validated for clinical or diagnostic uses.

For Research Use Only. Not for use in diagnostic procedures. © 2016–2017 Thermo Fisher Scientific Inc. All rights reserved. All trademarks are the property of Thermo Fisher Scientific and its subsidiaries unless otherwise specified. Luminex is a registered trademark of Luminex Corporation. **COL13761 0417**

ThermoFisher
SCIENTIFIC