

Western Blotting

Complete and Innovative Western Workflow Solutions



SEPARATE



TRANSFER



DETECT



The NuPAGE® SDS-PAGE Gel System

simulates the denaturing conditions of the traditional Laemmli systems (Tris-glycine SDS-PAGE gels). NuPAGE gels use a unique buffer formulation to maintain a neutral operating pH during electrophoresis, minimizing the "smiles" and poor resolution seen with Tris-glycine SDS-PAGE gels.

NuPAGE Bis-Tris and Tris-acetate gels also offer:

- Superior protein band resolution and stability
- Faster sample run times, at 35 to 50 minutes
- Long ambient product shelf life - 16 months
- More efficient western blot transfer

The Mini Gel Tank is designed for more intuitive use and convenience compared to traditional electrophoresis tanks.

- Versatile—compatible with NuPAGE®, Bolt®, or Novex® gels
- Easy sample loading—with forward-facing well configuration
- Simultaneous visualization of both gels—streamlined, side-by-side tank configuration
- Simplified monitoring of prestained protein markers—with white tank stand
- Less running buffer required—two separate gel chambers, so you only need to load sufficient buffer for each gel to the specified fill line



The XCell4 SureLock™ Midi-Cell allows simultaneous vertical electrophoresis of 1 to 4 midi gels without leaking, enabling consistent performance. It uses proprietary technology to make electrophoresis easier and more reliable than ever, and is designed to dissipate heat effectively and evenly, and enable high-resolution results when using Novex® midi gels.



Product	Quantity	Cat. No.
Separate		
Mini Gel Tank	1 unit	A25977
Bolt® Welcome Pack, 10 well	1 kit	NW0412A
Bolt® Welcome Pack, 15 well	1 kit	NW0412B
MagicMark™ XP Protein Standard	Varies	Varies
NativeMark™ Unstained standard	5 x 50 µL	LC0725
PageRuler™ Unstained Low Range Protein Ladder	2 x 250 µL	PI-26632
PageRuler™ Unstained Protein Ladder	2 x 250 µL	PI-26614
PageRuler™ Prestained Protein Ladder	Varies	PI-26616
PageRuler™ Plus Prestained Protein Ladder	Varies	PI-26619
Spectra™ Multicolor Broad Range Protein Ladder	Varies	PI-26634
Spectra™ Multicolor High Range Protein Ladder	Varies	PI-26625
HiMark™ Pre-stained Protein Standard	250 µL	LC5699
Bolt® Bis-Tris Plus Precast Gels	Varies	Varies
XCell4 SureLock™ Midi-Cell	1 each	WR0100
NuPAGE® Bis-Tris Precast Gels	Varies	Varies
NuPAGE® Tris-Acetate Precast Gels	Varies	Varies
Novex® Tris-Glycine Precast Gels	Varies	Varies
PowerEase® 90W Power Supply (115 VAC)	1 each	PS0090
PowerEase® 300W Power Supply (115 VAC)	1 each	PS0300
Separate and transfer		
Bolt® Welcome Pack with iBlot® 2 Dry Blotting System	1 kit	NW0412AIB2
Mini Gel Tank and Blot Module Set	1 kit	NW2000

For more information,
visit www.fishersci.com/life
or www.fishersci.ca/life



Western Blotting

Transfer

- **Mini Blot Wet Transfer Module** for seamless transfer in the Mini Gel Tank: fits inside the tank and requires less methanol-based transfer buffer
- **Thermo Scientific™ Pierce™ Power Blotter** designed specifically for rapid semi-dry transfer of 10 to 300 kDa proteins from polyacrylamide gels to nitrocellulose or PVDF membranes in 5 to 10 minutes
- **iBlot® 2 Dry Blotting System** for self-contained, reproducible, and flexible gel transfer in only 7 minutes: compatible with multiple gel chemistries, membrane types, and gel sizes



Detect

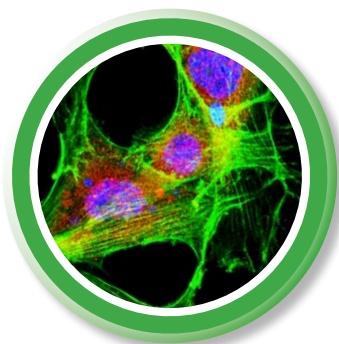
The **iBind™ Western System** is an automated western processing device. It's hands-free, reproducible, and compatible with all western detection protocols.



myECL™ Imager for one-touch image capture and analysis of western blots: a powerful and easy-to-use blot and gel documentation instrument for sensitive, multimode image capture and analysis that works with chemiluminescent, colorimetric, or UV light-activated fluorescent substrates or stains.

Additional Products

Primary and Secondary Antibodies and Conjugates
 Polyclonal antibodies for many species of IgG and other immunoglobulins, offered in purified (unconjugated) forms and as conjugates with HRP, AP, biotin and popular fluorophores. Fisher Scientific offers market leading antibodies such as Thermo Scientific, BD Biosciences and R&D Systems.



[Browse antibodies](#)

For more information, visit www.fishersci.com/life or www.fishersci.ca/life

Substrates

Chemiluminescent HRP substrates for excellent performance in western blotting: Thermo Scientific™ Pierce™ ECL, Pierce™ ECL 2, and SuperSignal™ Chemiluminescent Substrates deliver high sensitivity, long signal duration, strong signal intensity, and low background.



Product	Quantity	Cat. No.
Pierce™ ECL Substrate	500mL kit	PI-32106
Pierce™ ECL 2 Substrate	100mL kit	PI-80196
SuperSignal™ West Pico Chemiluminescent Substrate	500mL kit	PI-34080
SuperSignal™ West Dura Extended Duration Substrate	200mL kit	PI-34076
SuperSignal™ West Femto Maximum Sensitivity Substrate	200mL kit	PI-34096

© 2014 Thermo Fisher Scientific Inc. All rights reserved.
 Trademarks used are owned as indicated at www.fishersci.com/trademarks.

In the United States:

For customer service, call 1-800-766-7000
 To fax an order, use 1-800-926-1166
 To order online: www.fishersci.com

14_1957 LW/lp 11/14 BN1113142

In Canada:

For customer service, call 1-800-234-7437
 To fax an order, use 1-800-463-2996
 To order online: www.fishersci.ca



A Thermo Fisher Scientific Brand