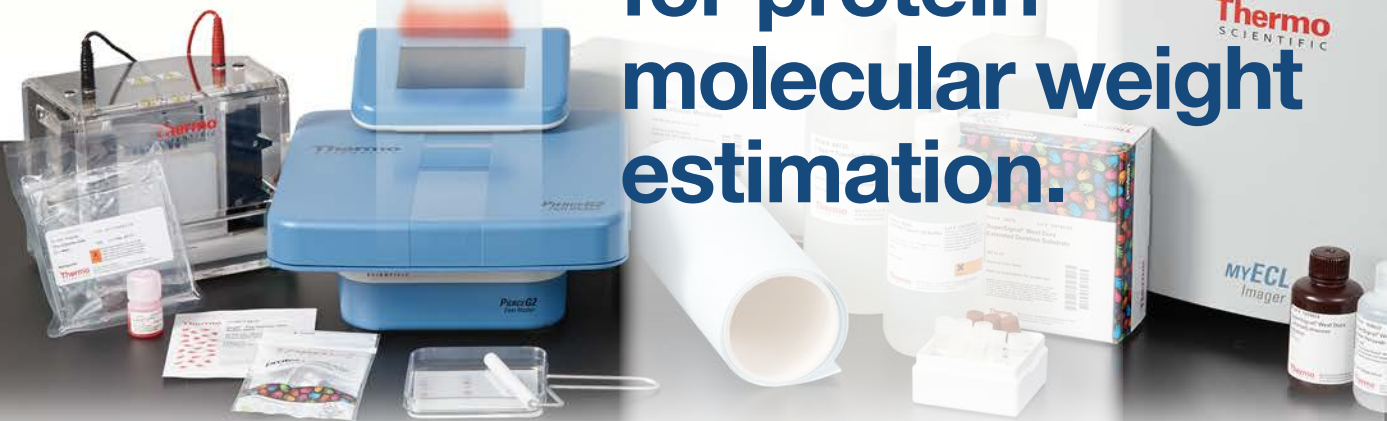


Thermo Scientific
**protein
ladders
give you**

more

**choices
for protein
molecular weight
estimation.**



Thermo Scientific™ Pierce™
Prestained and Unstained
Protein Ladders for easy, reliable
protein molecular weight estimation.

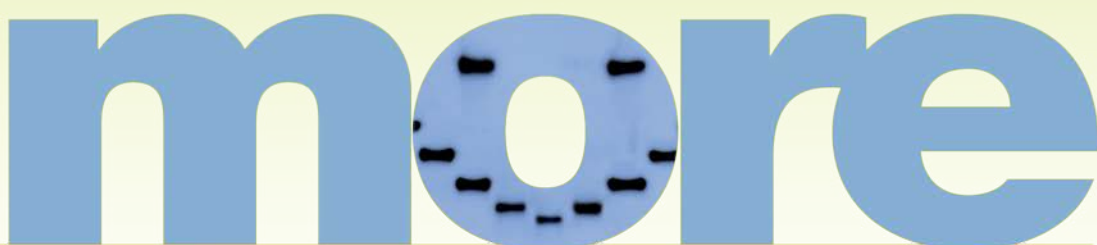


Prestained or unstained, including specialty protein ladders.

Choose what's best for your application.

Our ready-to-use mixes of recombinant proteins facilitate easy protein analysis during gel electrophoresis and Western blotting. The Prestained Protein Ladders are recommended for approximate determination of molecular weight, monitoring the progress of the electrophoresis run and the efficiency of the protein transfer to the membrane during Western blotting procedures. For precise determination of molecular weights of target proteins in any buffer system, we recommend using our Unstained Protein Ladders.

more



Highlights:

- **Best value** – high quality without the high price
- **Performance** – sharp protein band resolution and consistent migration patterns provide easy molecular weight determination
- **Convenient** – protein ladders are ready to load with no heating or boiling required
- **Reliable** – exceptional lot-to-lot consistency and reproducibility

choices for protein molecular weight estimation.

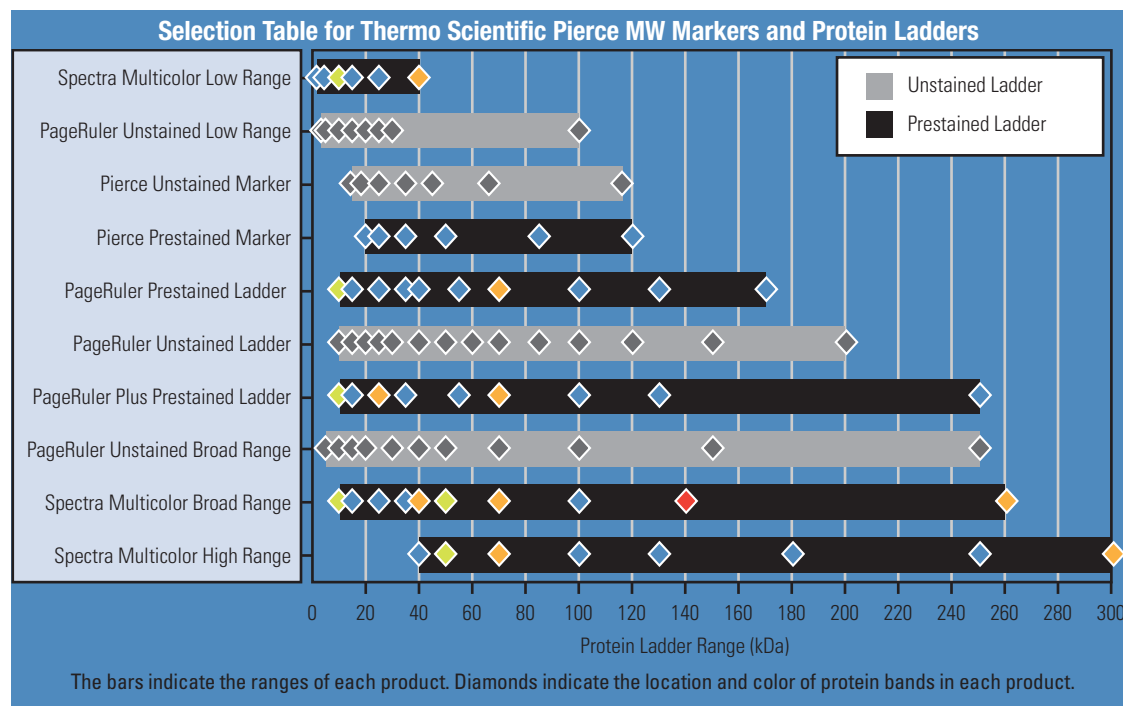


Thermo Scientific™ Pierce™
Prestained and Unstained
Protein Ladders for easy, reliable
protein molecular weight estimation.

Ordering Information

Product #	Description	Pkg. Size
PI26610	Pierce Unstained Protein MW Marker	2 x 1mL
PI26612	Pierce Prestained Protein MW Marker	500µL
PI26614	PageRuler Unstained Protein Ladder	2 x 250µL
PI26616	PageRuler Prestained Protein Ladder	2 x 250µL
PI26617	PageRuler Prestained Protein Ladder	10 x 250µL
PI26619	PageRuler Plus Prestained Protein Ladder	2 x 250µL
PI26620	PageRuler Plus Prestained Protein Ladder	10 x 250µL
PI26634	Spectra Multicolor Broad Range Protein Ladder	2 x 250µL
PI26623	Spectra Multicolor Broad Range Protein Ladder	10 x 250µL
PI26625	Spectra Multicolor High Range Protein Ladder	2 x 250µL
PI26628	Spectra Multicolor Low Range Protein Ladder	250µL
PI26630	PageRuler Unstained Broad Range Protein Ladder	2 x 250µL
PI26632	PageRuler Unstained Low Range Protein Ladder	2 x 250µL
PI84785	SuperSignal Molecular Weight Protein Ladder	250µL
PI84786	SuperSignal Enhanced Molecular Weight Protein Ladder	250µL
PI26635	PageRuler Prestained NIR Protein Ladder	2 x 250µL

thermoscientific.com/pierce

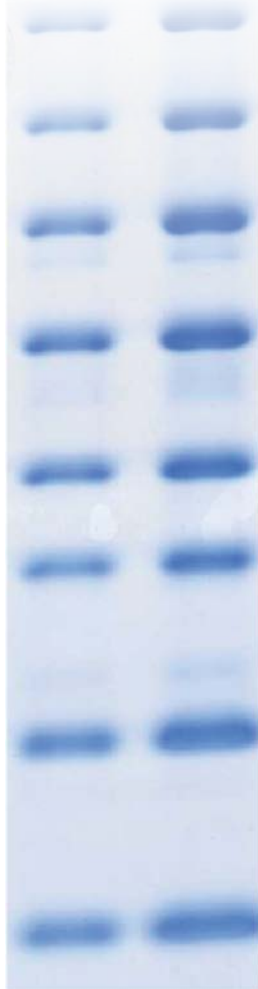


Choosing the right protein ladder. Use this table as a quick reference guide to select the right protein ladder for your application.

Thermo Scientific Pierce Protein Ladders					Application								
	Product Name	Product #	# Proteins	MW range	Reference bands	SDS PAGE					Western Blotting		
						Protein MW determination	Protein band visualization	Monitoring electrophoresis run	Coomassie/silver/fluorescent staining	NIR detection	Monitoring protein transfer	Chemiluminescent band visualization	
Colorimetric	Unstained	PageRuler Unstained Broad Range Protein Ladder	PI26630	11	5-250kDa	20, 50 and 100kDa	Best	—	—	Best	—	—	Good†
		PageRuler Unstained Protein Ladder	PI26614	14	10-200kDa	50kDa	Good	—	—	Good	—	—	Good†
		PageRuler Unstained Low Range Protein Ladder	PI26632	8	3.4-100kDa	25kDa	Best	—	—	Best	—	—	Good†
		PageRuler Unstained High Range Protein Ladder	PI26637	8	60-250kDa	150kDa	Best	—	—	Best	—	—	Good†
		Pierce Unstained Protein Molecular Weight Marker	PI26610	7	14.4-116kDa	—	Good	—	—	Good	—	—	—
	Prestained	PageRuler Prestained Protein Ladder	PI26616, PI26617	10	10-170kDa	Green 10kDa; Orange 70kDa	Good	Good	Good	—	Good†	Good	—
		PageRuler Plus Prestained Protein Ladder	PI26619, PI26620	9	10-250kDa	Green 10kDa; Orange 25 and 70kDa	Good	Good	Good	—	Good†	Good	—
		Spectra Multicolor Broad Range Protein Ladder	PI26634, PI26623	10	10-260kDa	Green 10 and 50kDa; Orange 40, 70 and 260kDa; Pink 140kDa	Good	Best	Best	—	Good†	Best	—
		Spectra Multicolor Low Range Protein Ladder	PI26628	6	1.7-40kDa	Green 10kDa; Orange 40kDa	Good	Best	Best	—	Good†	Best	—
		Spectra Multicolor High Range Protein Ladder	PI26625	8	40-300kDa	Green 50kDa; Orange 70 and 300kDa	Good	Best	Best	—	Good†	Best	—
	Pierce Prestained Protein Molecular Weight Marker	PI26612	6	20-120kDa	—	Good	Good	Good	—	Good	Good	—	
Chemi. Lum.	SuperSignal Molecular Weight Protein Ladder	PI84785, PI84786	8	20-150kDa	—	Good	—	—	Good	—	Good	Best	
NIR	PageRuler Prestained NIR Protein Ladder	PI26635	10	11-250kDa	55kDa	Good	Good	Good	—	Best	Good	—	

† with Strep-Tactin™ HRP or AP Conjugates

‡ Blue and green prestained bands fluoresce in NIR region



Migration Patterns of PageRuler Prestained Protein Ladder

Thermo Scientific PageRuler Prestained Protein Ladder																
Gel type	Tris-Glycine							Tris-Acetate ^{††}		Bis-Tris ^{††}						
Gel concentration	4-20%	8-16%	10-20%	8%	10%	12%	15%	3-8%	7%	4-12%	10%		12%			
Running buffer	Tris-Glycine							Tris-Acetate		MOPS	MES	MOPS	MES	MOPS	MES	
Apparent Molecular Sizes (kDa)																
% length of gel	10			170	130	100	70	170	130	100	150	140	115	80	70	
	20	170	130	100	70	170	130	100	70	55	40	150	140	115	80	70
	30	100	70	100	55	40	35	150	120	85	120	80	65	50	40	
	40	70	55	40	35	25	15	120	85	65	85	50	40	30	25	
	50	55	40	35	25	15	10	85	65	50	50	40	30	25	15	
	60	40	35	25	15	10	10	65	50	40	40	30	25	15	10	
	70	35	25	15	10	10	10	50	40	30	30	25	15	10	10	
	80	25	15	10	10	10	10	40	30	25	25	15	10	10	10	
	90	15	10	10	10	10	10	30	25	15	15	10	10	10	10	
	100	10	10	10	10	10	10	25	15	10	10	10	10	10	10	

Migration Patterns of PageRuler Plus Prestained Protein Ladder

Thermo Scientific PageRuler Plus Prestained Protein Ladder																
Gel type	Tris-Glycine							Tris-Acetate ^{††}		Bis-Tris ^{††}						
Gel concentration	4-20%	8-16%	10-20%	8%	10%	12%	15%	3-8%	7%	4-12%	10%		12%			
Running buffer	Tris-Glycine							Tris-Acetate		MOPS	MES	MOPS	MES	MOPS	MES	
Apparent Molecular Sizes (kDa)																
% length of gel	10			250	130	100	70	250	130	100	205	185	115	80	70	
	20	250	130	100	70	250	130	100	70	55	40	205	185	115	80	70
	30	130	100	70	100	55	35	120	85	65	120	80	65	50	40	
	40	100	70	100	55	35	25	85	65	50	85	50	40	30	25	
	50	70	55	40	35	25	15	65	50	40	50	40	30	25	15	
	60	55	40	35	25	15	10	50	40	30	40	30	25	15	10	
	70	40	35	25	15	10	10	40	30	25	30	25	15	10	10	
	80	35	25	15	10	10	10	30	25	15	25	15	10	10	10	
	90	25	15	10	10	10	10	25	15	10	15	10	10	10	10	
	100	15	10	10	10	10	10	15	10	10	10	10	10	10	10	

Migration Patterns of Spectra Multicolor Broad Range Protein Ladder

Thermo Scientific Spectra Multicolor Broad Range Protein Ladder																
Gel type	Tris-Glycine							Tris-Acetate ^{††}		Bis-Tris ^{††}						
Gel concentration	4-20%	8-16%	10-20%	8%	10%	12%	15%	3-8%	7%	4-12%	10%		12%			
Running buffer	Tris-Glycine							Tris-Acetate		MOPS	MES	MOPS	MES	MOPS	MES	
Apparent Molecular Sizes (kDa)																
% length of gel	10			260	140	100	70	260	140	100	225	225	235	225	235	
	20	260	140	100	70	260	140	100	70	50	40	225	225	235	225	235
	30	140	100	70	100	50	40	120	85	65	120	115	120	115	120	
	40	100	70	100	50	40	35	85	65	50	80	80	80	65	65	
	50	70	50	40	35	25	15	65	50	40	65	50	50	40	35	
	60	50	40	35	25	15	10	50	40	30	50	40	30	25	20	
	70	40	35	25	15	10	10	40	30	25	40	30	25	20	15	
	80	35	25	15	10	10	10	30	25	15	30	25	15	10	10	
	90	25	15	10	10	10	10	25	15	10	25	15	10	10	10	
	100	15	10	10	10	10	10	15	10	10	15	10	10	10	10	

thermoscientific.com/pierce

Migration Patterns of Spectra Multicolor High Range and Low Range Protein Ladder

Thermo Scientific Spectra Multicolor High Range Protein Ladder										
Gel type	Tris-Glycine					Tris-Acetate ^{††}	Bis-Tris ^{††}			
Gel concentration	4-12%	4%	6%	8%	10%	4-20%	4-12%			
Running buffer	Tris-Glycine					Tris-Acetate	MOPS			
Apparent Molecular Sizes (kDa)										
% length of gel	10	300	250	180	130	100	70	300	270	270
	20	250	180	130	100	70	250	205	185	
	30	180	130	100	70	180	150	120		
	40	130	100	70	130	100	85	100	85	65
	50	100	70	100	70	85	65	70	65	50
	60	70	50	70	50	50	40	50	40	40
	70	50	40	50	40	40	40	40	40	40
	80	40	40	40	40	40	40	40	40	40
	90	40	40	40	40	40	40	40	40	40
	100	40	40	40	40	40	40	40	40	40

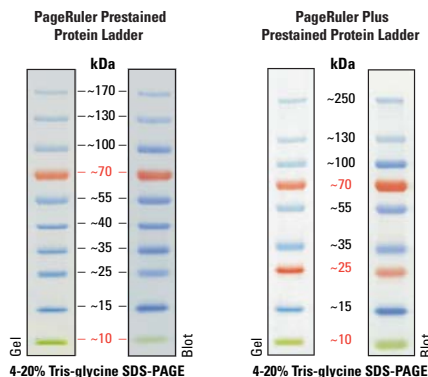
Thermo Scientific Spectra Multicolor Low Range Protein Ladder											
Gel type	Tris-Tricine										
Gel concentration	4-20%	10-20%	14%	16%	18%	14-SP %	16-SP %	18-SP %	10-20% ^{†††}	16% ^{††}	10-20% ^{†††}
Running buffer	Tris-Tricine SDS										
Apparent Molecular Weights (kDa)											
% length of gel	10					40					
	20					40					
	30					25					
	40					15					
	50					10					
	60					5					
	70					5					
	80					2					
	90					2					
	100					2					

Note: The apparent molecular size of each protein (kDa) has been determined by calibration against an unstained protein ladder in each electrophoresis condition.
 †† – Migration patterns were determined using respective NuPAGE™ precast gels.

SP – small peptide SDS-polyacrylamide gel with higher degree of crosslinking (c=5% instead of usual ~3%).
 ††† – migration patterns were determined using respective Ready Gel™ precast gel.

Thermo Scientific PageRuler Prestained Protein Ladders

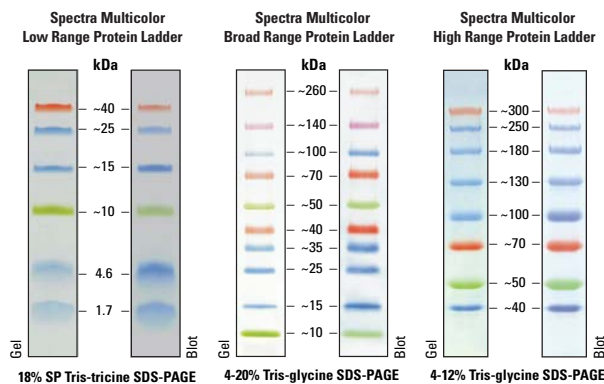
The Thermo Scientific™ PageRuler™ and PageRuler Plus Prestained Protein Ladders are comprised of highly purified recombinant proteins bound to three different chromophores for easy protein molecular weight determination. The green and orange reference bands in the PageRuler products provide easy orientation of the protein bands.



Product #'s PI26616, PI26617 Product #'s PI26619, PI26620

Thermo Scientific Spectra Multicolor Protein Ladders

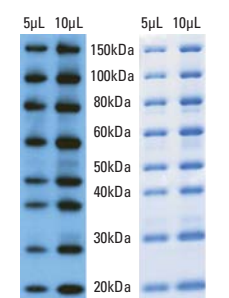
Four different chromophores bound to proteins in Thermo Scientific™ Spectra™ Multicolor Broad Range Protein Ladders produce a brightly colored ladder with an easy-to-remember pattern. The Spectra Multicolor High Range and Low Range Protein Ladders are designed for large and small protein analysis, respectively.



Product # PI26628 Product #'s PI26623, PI26634 Product # PI26625

Thermo Scientific SuperSignal Molecular Weight Protein Ladders

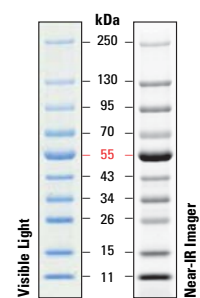
The Thermo Scientific™ SuperSignal™ Molecular Weight Protein Ladders contain a ready-to-use stabilized mixture of eight recombinant proteins ranging in size from 20 to 150kDa. These recombinant proteins bind antibodies used in the Western blot through an IgG binding site. The protein markers can then be visualized either using appropriate substrates for enzyme-labeled antibodies or via fluorescent dye-labeled antibodies. Use the SuperSignal Enhanced Molecular Weight Protein Ladders with mouse monoclonals.



Product #'s PI84785, PI84786

Thermo Scientific PageRuler Prestained NIR Ladder

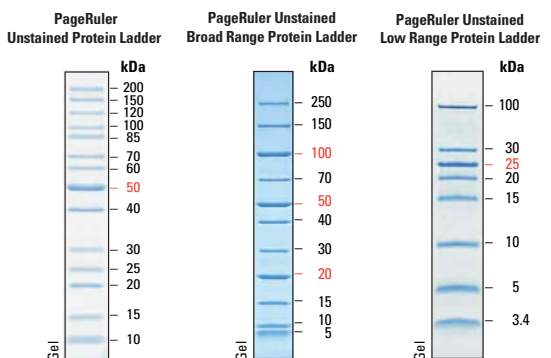
The Thermo Scientific™ PageRuler™ Prestained NIR Protein Ladder is a mixture of 10 proteins (11 to 250kDa) that are blue-stained and fluorescently labeled for near-IR fluorescence visualization and protein sizing. The protein MW markers in this ladder resolve into sharp bands when analyzed by SDS-PAGE and are labeled with a fluorescent dye for visualization with instruments equipped with near-infrared (NIR) fluorescence detection. The bands are also directly visible because the proteins are prestained blue.



Product # PI26635

Thermo Scientific PageRuler Unstained Protein Ladders

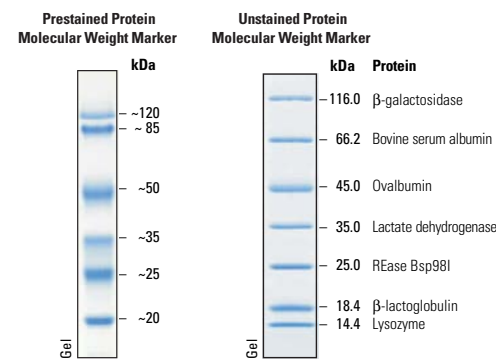
Thermo Scientific™ PageRuler™ Unstained Protein Ladders are mixtures of recombinant, highly purified proteins designed for accurate sizing of proteins by SDS-PAGE. The ladders resolve into clearly identifiable sharp bands when analyzed by SDS-PAGE and stained with Coomassie Blue or silver stain. Each ladder contains protein bands of greater intensity which serve as reference bands. Proteins can be detected on Western blots by staining with Ponceau S, Coomassie Blue, (except for 3.4kDa and 5kDa polypeptides) or by using Strep-Tactin™ conjugates.



Product # PI26614 Product # PI26630 Product # PI26632

Thermo Scientific Pierce Protein Molecular Weight Marker

Thermo Scientific™ Pierce™ Prestained Protein Molecular Weight Markers are designed to monitor protein migration during SDS-polyacrylamide gel electrophoreses and monitor protein transfer onto membranes. Pierce Unstained Protein Weight Markers produce sharp bands on SDS-polyacrylamide gel following staining with Coomassie-based or silver stains and are recommended for accurate sizing of proteins on SDS PAGE and Western blots.



Product # PI26612 Product # PI26610

thermoscientific.com/pierce

© 2014 Thermo Fisher Scientific Inc. All rights reserved. These products are supplied for laboratory or manufacturing applications only. Ready Gel is a registered trademark of Bio-Rad Laboratories, Inc. Strep-Tactin is a registered trademark of IBA GmbH. All other trademarks are the property of Thermo Fisher Scientific Inc. and its subsidiaries.



In the United States:

For customer service, call 1-800-766-7000
To fax an order, use 1-800-926-1166
To order online: www.fishersci.com

In Canada:

For customer service, call 1-800-234-7437
To fax an order, use 1-800-463-2996
To order online: www.fishersci.ca



A Thermo Fisher Scientific Brand