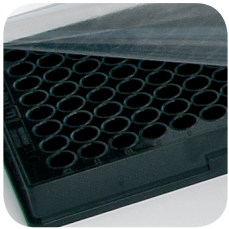
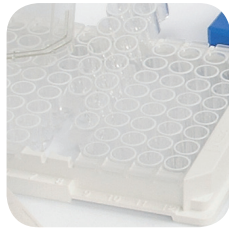


# Guide to choosing Microplates for Immunology

## Thermo Scientific Nunc



Solid Plates



Framed Modules/Strips



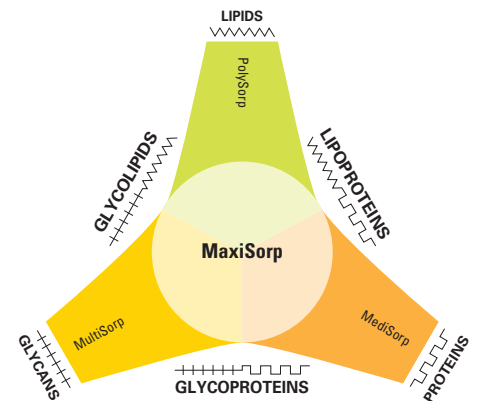
Loose modules/strips

### Step 1 - Choose your plate format

Which surface do you need?

- Passive absorption surfaces

| Surface        | Polysorp                       | Medisorp            | Maxisorp              | Multisorp                             |
|----------------|--------------------------------|---------------------|-----------------------|---------------------------------------|
| Which Molecule | Lipids (hydrophobic molecules) | Proteins (Antigens) | Proteins (Antibodies) | Glycoproteins (hydrophilic molecules) |



- Covalent coupling surfaces

**Immobilizer Amino** : covalent coupling of the molecule to permanently immobilize it with either the NH<sub>2</sub> or SH terminal  
 Advantages : no blocking step required, reduced concentration of molecule for binding and high sensitivity.

- Affinity capture surface

**Immobilizer Streptavidin** : allows binding of biotinylated molecules, no blocking required and increased sensitivity

Wich type of bottom ?



**Flat Bottom (F)**  
For good reading



**Modified flat bottom (C)**  
For good washing and reading



**Round bottom (U)**  
Optimal washing but not as easy to read

Detection method ?

**Colourimetric**  
Transparent plate

**Fluorescence**  
Black Plate

**Chemiluminescence**  
White plate

## Step 2- Choose the right plate

| Type<br>Microplate | Well bottom | Breakable? | Type        | Surface  |          |          |           |                   |                          |
|--------------------|-------------|------------|-------------|----------|----------|----------|-----------|-------------------|--------------------------|
|                    |             |            |             | Polysorp | Medisorp | Maxisorp | Multisorp | Immobilizer Amino | Immobilizer Streptavidin |
| 96 wells           | F96         |            | Transparent | 475094   | 467320   | 442 404  | 467340    | 436006            | 436014                   |
|                    |             |            |             |          |          | 439454 * |           |                   |                          |
|                    |             |            | White       | 436111   |          | 436110   |           | 436007            | 436015                   |
|                    |             |            | Black       | 437112   |          | 437111   |           | 436008            | 436016                   |
|                    | U96         |            | Transparent | 475434   |          | 449824   |           |                   |                          |
|                    | C96         |            | Transparent | 446140   |          | 430341   |           |                   |                          |
|                    |             |            |             |          | 446612*  |          |           |                   |                          |
|                    |             | White      |             |          | 437796   |          |           |                   |                          |
| 384 wells          | F384        |            | Transparent |          |          | 464718   |           | 436009            | 4360017                  |
|                    |             |            | White       |          |          | 460372   |           |                   | 4360018                  |
|                    |             |            | Black       |          |          | 460518   |           | 436012            |                          |
| 8 wells strips     | F8          |            | Transparent | 469078   | 467120   | 468667   | 467140    | 436013            | 436020                   |
|                    | U8          |            | Transparent | 475086   |          | 475078   |           |                   |                          |
|                    |             | •          |             | 446477   |          | 446639   |           |                   |                          |
|                    | C8          |            | Transparent | 444865   |          | 445101   |           |                   |                          |
|                    |             | •          |             | 446442   | 446470   | 446469   | 446490    | 436023            | 436022                   |
|                    |             | •          | White       | 437702   |          | 437591   |           |                   |                          |
|                    |             | •          | Black       | 463200   |          | 463201   |           |                   |                          |
|                    | •           | Black      | 446473      |          | 446471   |          |           |                   |                          |
| 12 wells strips    | C12         |            | Transparent | 473717   |          | 473709   |           |                   |                          |
| 16 well strips     | F16         |            | Transparent | 467679   |          | 469914   |           |                   |                          |
|                    |             |            | Black       | 475523   |          | 475515   |           |                   |                          |
|                    | U16         |            | Transparent |          |          | 469264   |           |                   |                          |

\* = certified plates

[thermoscientific.com](http://thermoscientific.com)

© 2015 Thermo Fisher Scientific Inc. All rights reserved. All trademarks are the property of Thermo Fisher Scientific Inc. and its subsidiaries. Specifications, terms and pricing are subject to change. Not all products are available in all countries. Please consult your local sales representative for details.

**Australia** +61 39757 4300  
**Austria** +43 1 801 40 0  
**Belgium** +32 53 73 42 41  
**China** +800 810 5118 or  
+400 650 5118  
**France** +33 2 2803 2180  
**Germany national toll free** 0800 1 536 376  
**Germany international** +49 6184 90 6000

**India toll free** 1800 22 8374  
**India** +91 22 6716 2200  
**Italy** +39 02 95059 552  
**Japan** +81 3 5826 1616  
**Netherlands** +31 76 579 55 55  
**New Zealand** +64 9 980 6700  
**Nordic/Baltic/CIS countries**  
+358 10 329 2200

**Russia** +7 812 703 42 15  
**Spain/Portugal** +34 93 223 09 18  
**Switzerland** +41 44 454 12 12  
**UK/Ireland** +44 870 609 9203  
**USA/Canada** +1 866 984 3766

**Other Asian countries** +852 2885 4613  
**Countries not listed** +49 6184 90 6000

**Thermo**  
**SCIENTIFIC**

A Thermo Fisher Scientific Brand