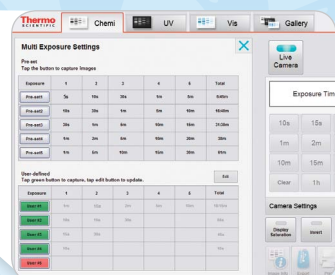


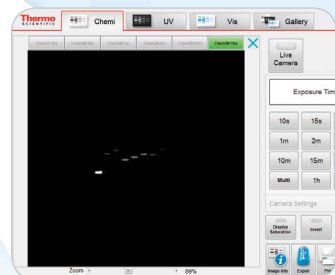
looking to improve your image?



one touch to your image –
no extra parameters to set



one touch to multiple exposures



one touch to compare up to
five images

Superior imaging
at your finger tips
with Thermo Scientific
myECL Imager

a single touch opens the door

to an improved way
to capture and analyze your gels and Western blots.

Thermo Scientific myECL Imager

The myECL™ Imager revolutionizes the capture and analysis of:

- chemiluminescent Western blots
- stained protein gels
- stained nucleic acid gels

It completely simplifies the entire imaging workflow, without compromising sensitivity. With a single touch you can acquire an image. Or with a single touch, you can take up to five different preset Western blot exposure times and go on to further analysis.

and new tools come through for you

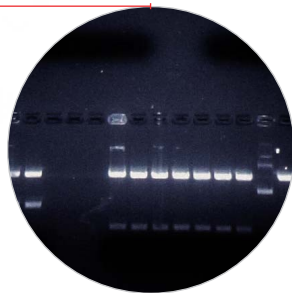
like no other
imager can. You'll be amazed how much you can do in so little time.

Thermo Scientific myImageAnalysis Software

The myImageAnalysis™ Software takes your gel or blot analysis a step further with a suite of programs for protein and nucleic acids applications. The easy-to-learn analysis programs deliver like no others, eliminating many manual tasks and saving you time.

The myImageAnalysis Software has all the analysis programs you expect:

- Determine molecular weights of protein and nucleic acid samples using installed or custom added markers
- Perform lane profile densitometry
- Obtain relative and absolute quantitation of bands
- Automatically calculate sample purity based on band and lane intensity
- Edit images with tools for contrast, rotation, cropping, despeckling and text annotation



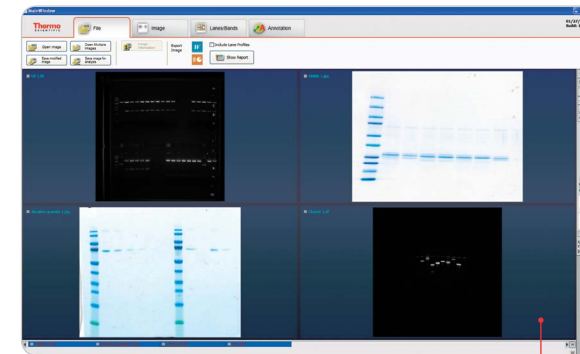
The sensitivity is amazing – more than twice the sensitivity of X-ray film, with 10 times the dynamic range.



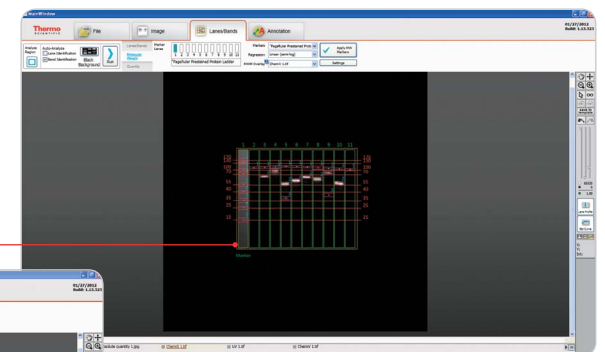
It's just so simple, fast, and intuitive – Unpack. Plug in. You are ready to capture images within minutes.



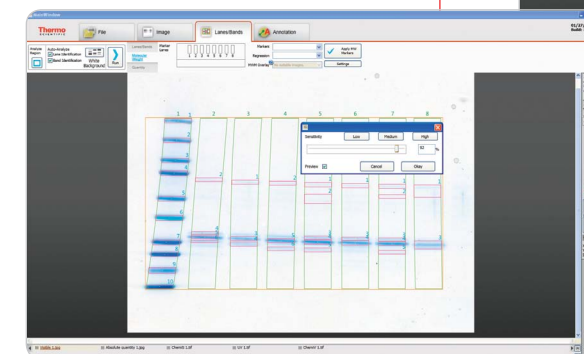
It takes so little space – the small instrument size saves space, and is an effective substitute for a darkroom.



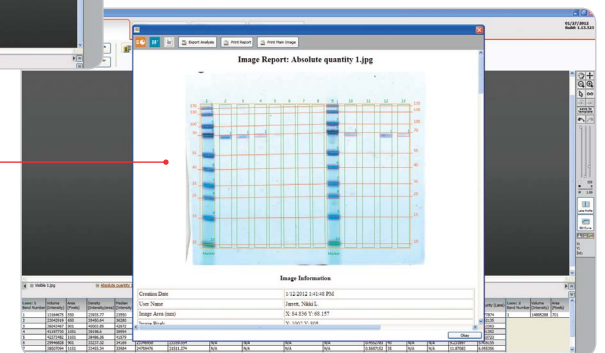
Simultaneously view multiple images – compare and contrast up to six images, saving you time.



Intuitive automatic gel analysis – automatic lane and band identification that is easy to use, with accurate results.



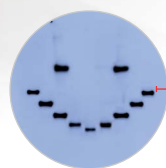
Automate colorimetric molecular weight overlay – eliminates the painful manual process to overlay molecular weight markers on Western blots.



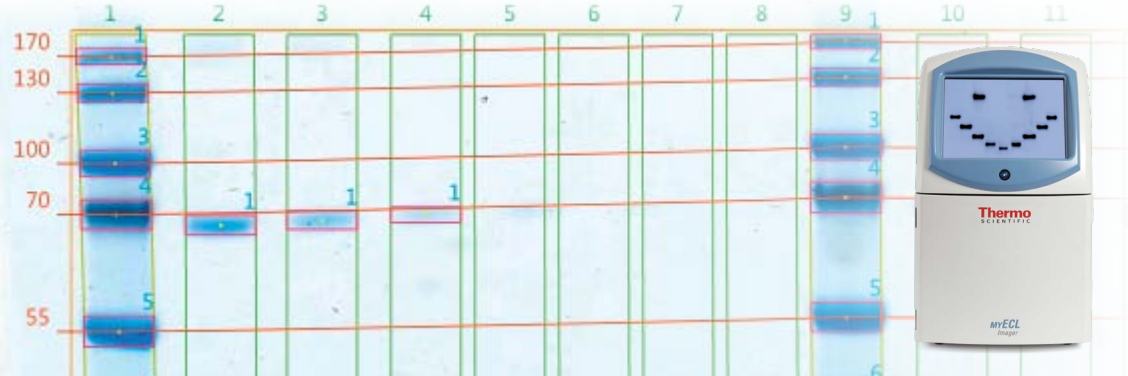
Quickly and easily share and export data – save files in non-proprietary data formats (TIFF, JPEG, GIF, BMP and PNG); export images and data directly to Microsoft® Word, Excel® and Powerpoint® programs.



www.thermoscientific.com/myeclimager



capture → display → print → save → access → store → share



myECL Imager Instrument Specifications

CCD camera	16 bit, 4 megapixel; thermoelectrically cooled to -25°C (±0.1)
Lens	Motorized, fixed 50mm, <i>f</i> /0.95.
Array size (pixels)	2048 x 2048
Pixel size	7.4 x 7.4 microns
Field of view	15cm x 15cm
Dynamic range	4.0 orders of magnitude
Raw image format	TIFF
Excitation source	365nm UV transilluminator; Epi-white light (includes conversion screen)
Filter wheel	Motorized, 3 position
Computer	Internal with 200 GB hard drive*
Touch screen display	10.4 inch LCD
Ports	3 USB, 1 network
Instrument size, L x W x H	57cm x 31cm x 52cm
Weight	32kg (70lb)

*Approximately 100,000 chemiluminescent or 200,000 gel image files can be stored on the internal hard drive using the default image acquisition setting.

myECL Imager Accessories (Included)

- myImageAnalysis Software, 5 licenses
- Orange filter (565-620nm) for ethidium bromide or SYPRO® Orange
- Black chemiluminescent exposure screen
- White light conversion screen
- Clear transilluminator plate/UV exposure screen
- Touch screen clear plastic protector
- Quick Start Guide
- USB memory device
- Touch screen stylus (includes holder)

myECL Imager Accessories (Optional)

- 306nm UV transilluminator bulb
- Green filter (510-550nm)
- Red filter (600-640nm)

myECL Imager is uniquely optimized for our line of imaging reagents and kits.

Thermo Scientific SuperSignal West Dura Chemiluminescent Substrate Kits

An enhanced luminol-based chemiluminescent substrate specially for CCD imaging with long signal duration and femtogram level sensitivity.

Thermo Scientific Imperial Protein Stain Kits

A fast, sensitive (3ng) and consistent protein gel stain based on coomassie R-250 dye.

Thermo Scientific Pierce Protein Ladders

A full line of pre-stained and unstained molecular weight markers that facilitate detection and assessment of relative protein sizes in colorimetric, fluorescent and chemiluminescent methods.



www.thermoscientific.com/myeclimager

© 2013 Thermo Fisher Scientific Inc. All rights reserved. These products are supplied for laboratory or manufacturing applications only. Microsoft, Excel and Powerpoint are registered trademarks of Microsoft Corp. SYPRO is a registered trademark of Life Technologies Corp. All other trademarks are the property of Thermo Fisher Scientific Inc. and its subsidiaries.



In the United States:
For customer service, call 1-800-766-7000.
To fax an order, use 1-800-926-1166.
To order online: www.fishersci.com

In Canada:
For customer service, call 1-800-234-7437.
To fax an order, use 1-800-463-2996.
To order online: www.fishersci.ca

Thermo
 S C I E N T I F I C

Part of Thermo Fisher Scientific